

Scaling up Building with Nature

Next steps towards creating global demand



By Jane Madgwick, Chief Executive Officer
and Pieter van Eijk, Programme Head, Deltas and Coasts



Building with Nature in the Netherlands slowly taking off



Sand nourishment Galgeplaat



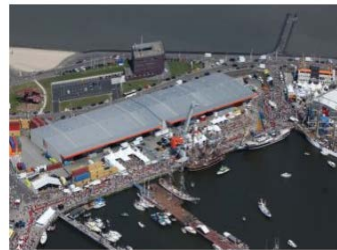
Mud motor for salt marsh development



Marker Wadden



Sand Motor Delfland Coast



Sustainable development Port of Delfzijl (Marconi)



Hybrid Flood Defence Houtribdijk

Building with Nature abroad: the need

1. **Unintended side-effects:** reclamation of floodplain wetlands, leads to massive flooding elsewhere (Panama city, Panama)



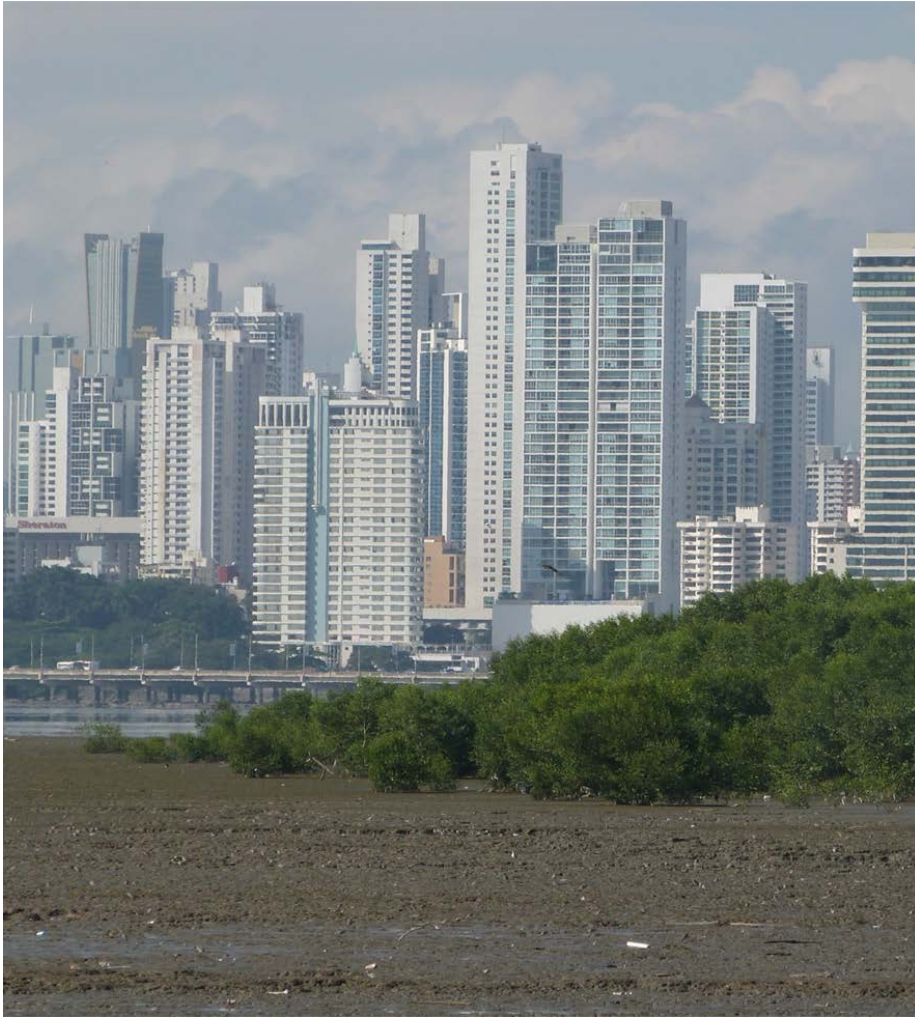
2. **Mal-function:** infrastructure failure due to lack of systems understanding (Paramaribo Suriname)



3. **Environmental damages:** large estates in vulnerable wetlands (Buenos Aires, Argentina)



Building with Nature global: drivers of opportunity



- Rising investments in infrastructure
- Climate change
- Environmental and social regulations
- Demand for multiple stakeholder solutions
- Agenda 2030

Pilots in current BwN programme: Demak, Indonesia



Pilots by others: Florida, US



The challenge for Ecoshape: from pilot to investible business cases

Perception:

Agree on need



Commitment to engage

Research:

Knowledge & Ideas



Joint learning and innovation

This is where we are now...

Pilot:

Show that it works



Project:

Make it happen



Uptake by the market

Grant funding

Investment

Ecoshape partners leading the way globally?

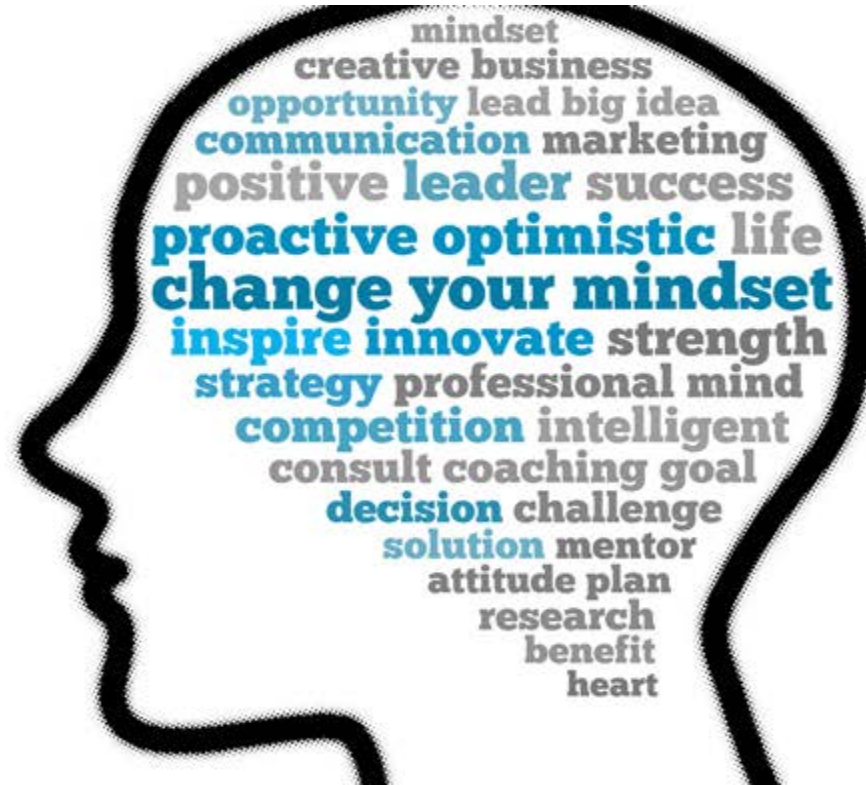


Ecoshape partners leading the way globally?



Major opportunity for harmonizing trade, aid and sustainability agendas!

But how do we move from pilots to investible solutions?



[This Photo](#) by Unknown Author is licensed under [CC BY-NC-ND](#)

But how do we move from pilots to investible solutions?

Guidance and tools

BwN principles integrated in policies and regulations

Organise political support through ambassadors

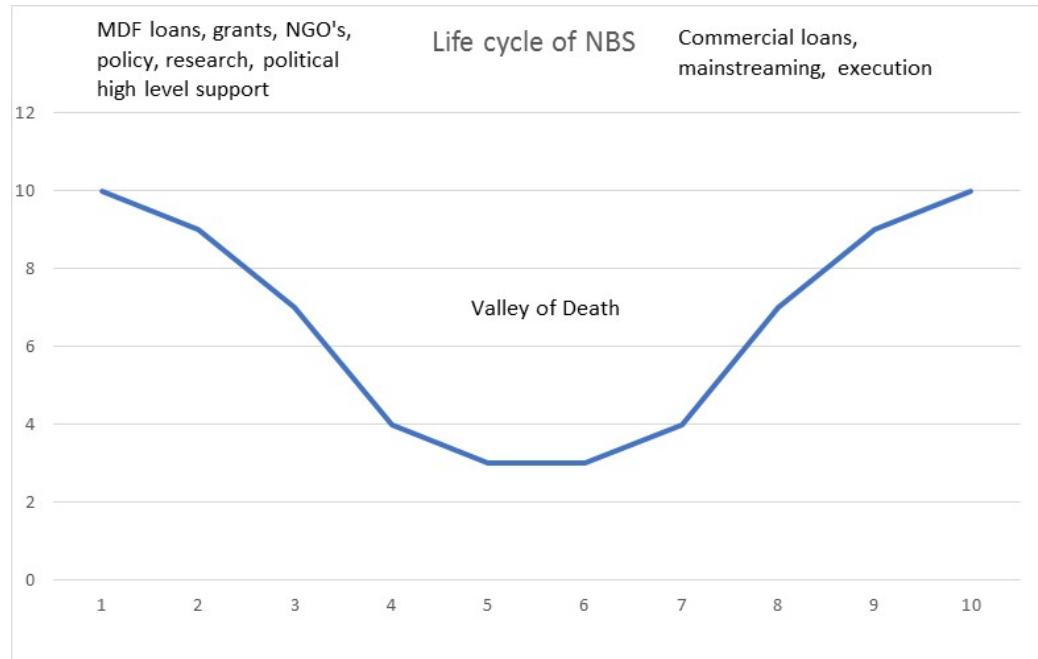
Consider Building with Nature as a process, not as a static design solution!

Joint learning through public-private consortia

Integration in core business of engineering companies

Organise political support through ambassadors

But how do we move from pilots to investible solutions?




Overcoming the *valley of death* requires us to gradually phase out grants as an enabling environment emerges. The pre-competitive and competitive domains are part of a continuum, not two separate domains!

Our impact

A global market for Building with Nature

Two leveraging strategies

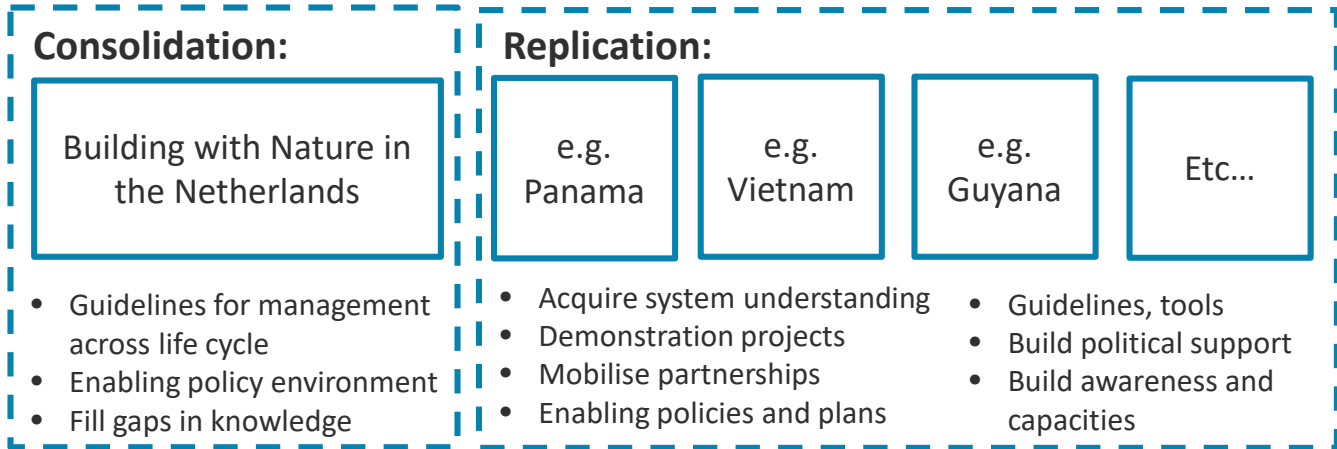
Influence investment
Introduce BwN principles in large-scale development schemes



Specific Business Cases
Promote BwN solutions to solve specific engineering challenges




Cases for upscaling



Global Programme

- Community of practice
- Design guidance & tools
- Training programme
- Dialogue with multilateral organisations (Development banks, UN bodies, etc.)
- Global outreach



**Some examples of interventions
for upscaling of BwN**

Connecting existing innovation programmes towards a global call for action



US Army Corps of Engineers



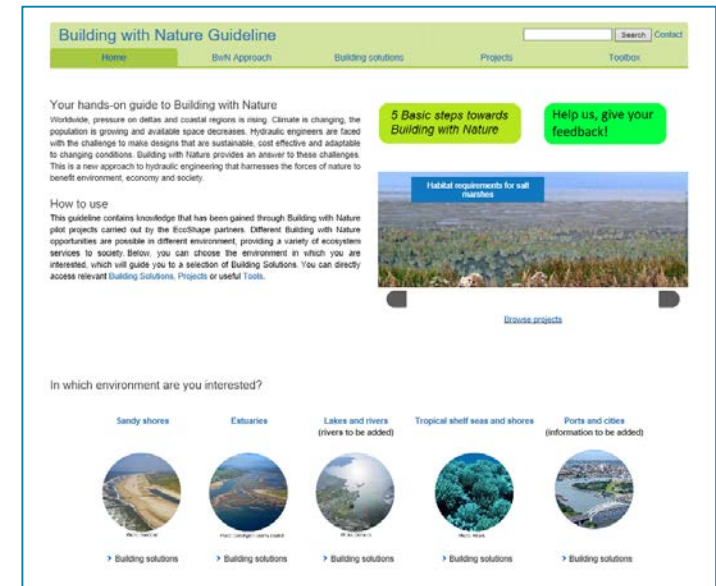
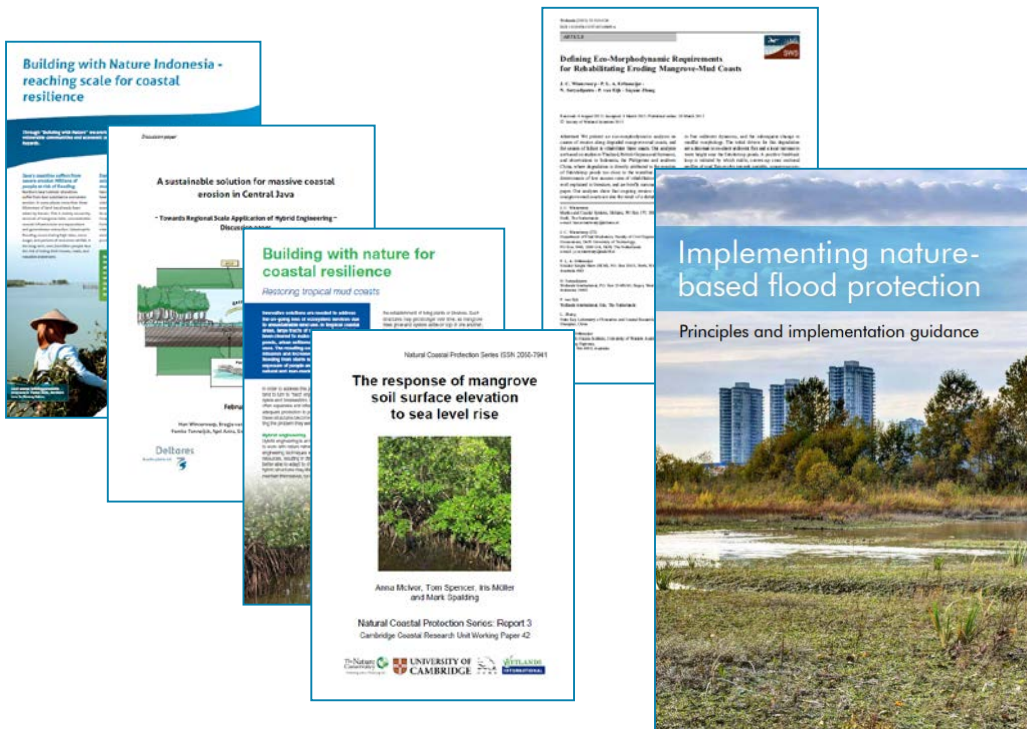
Building with Nature

Engineering with Nature

Working with Nature

Outreach towards investment banks, multilateral agencies, governments

Disseminate knowledge, tools and policy guidelines to create an enabling environment



Translate available materials in a region-specific context and develop new ones as needed

Investible business case: grey-green solutions along the Guyana shield coastline



- Addressing erosion and ensuring climate resilience by combining hard structures and mangrove restoration



Support flood risk management and urban planning through Building with Nature in Panama



The Hydrovia: Building with Nature to sustain wetlands and support development in la Plata Basin



- Maintaining a free-flowing La Plata basin, while meeting economic development needs

Conclusions

- Building with Nature has slowly started to enter the market in the Netherlands
- The Dutch experience puts the Ecoshape consortium in a strategic place to lead the way globally
- Major opportunity for the Dutch government in support of the development aid and foreign trade agenda
- To succeed, we need to see Building with Nature as a process, not as a static design solution!
- Building with Nature phase 3: combining global outreach with targeted business-case development?



Wetlands International: www.wetlands.org;
Pieter.vanEijk@wetlands.org

 [Wetlands International](https://www.facebook.com/WetlandsIntl)

 [@WetlandsInt](https://twitter.com/WetlandsInt)

 [Wetlands International](https://www.linkedin.com/company/wetlands-international)

